



Parc Agrari del Baix Llobregat

Site Report



Co-funded by
the European Union



Università
di Genova

Iaac

Institute for
advanced
architecture
of Catalonia



Leibniz
Universität
Hannover

UGM

CHAMP LIBRE



reCITYing Site Report

Parc Agrari del Baix Llobregat,
Parc Agrari del Baix Llobregat, Camí Sorral, s/n, 08820 Barcelona

2024-2028 cofunded by the European Union

Report by:
Willy Muller, Laura Guimaraes, Ana Gallego, Isabel
Lima, Mariano Gomez Luque, Mathilde Marengo

**reactivating unused urban spaces
through architecture and arts**

CONTENT

- 1. Site characteristics**
- 2. Socio-cultural background**
- 3. Photo survey**
- 4. Previous events in the area**
- 5. Local audience development strategy**

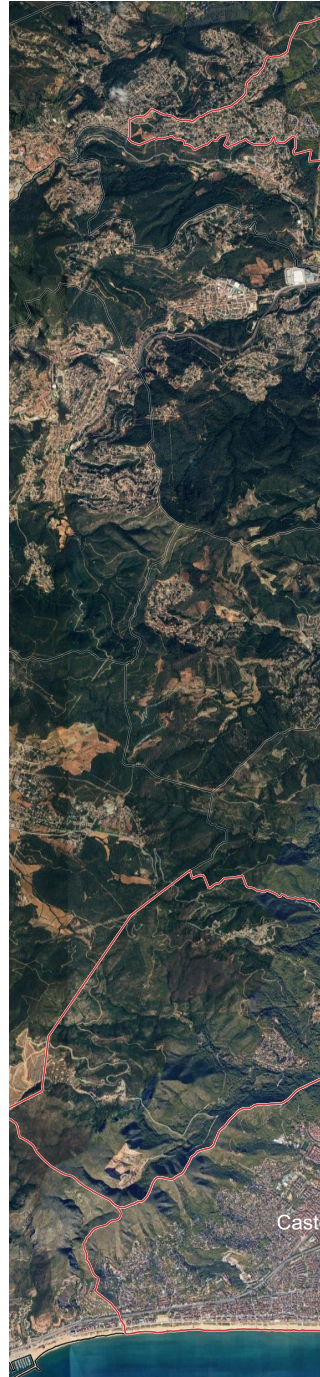
Site characteristics

Parc Agrari del Baix Llobregat, Barcelona, Spain

For the case of Barcelona, IAAC will work with the agricultural park Parc Agrari del Baix Llobregat, one of the oldest and most fertile agricultural lands of Spain, located in the outskirts of the city. Formed by 14 municipalities, apart from Barcelona, the agricultural park was created in 1998 in order to stop the urban pressure on agricultural lands and stimulate local food production/consumption, by enhancing a viable and sustainable agricultural activity. The park is also the setting of traditional Spanish farmhouses called Masias, which represent a rural built heritage, today progressively in abandonment. By occupying underused rural space and farmsteads in the Parc Agrari, IAAC proposes to valorize the role of Masias as rural hotspots of creative innovation and social awareness about regional foodshed models.

Creative actions in Barcelona will consist of experimenting with temporary reuse, recycling and land-art, to foster cultural circuits of education on rural sustainability, green skills and makers' talents by involving IAAC's expertise in digital fabrication and tech innovation. We will combine the specialised knowledge of local farmers with young creatives and professionals coming from the fields of architecture, agronomy and event design in a recursive set of creative workshops envisioning new development scenarios for continuous productive rural-urban landscapes.

Audience engagement will be promoted through the involvement of local communities and young creatives in the brainstorming activity of local focus groups preliminary to the preparation of the creative workshop.





el Papiol

Pallejà

Molins de Rei

Sant Feliu de Llobregat

Barcelona

Sant Vicenç dels Horts

Santa Coloma de Cervelló

Sant Joan Despi

Cornellà de Llobregat

Sant Boi de Llobregat

el Prat de Llobregat

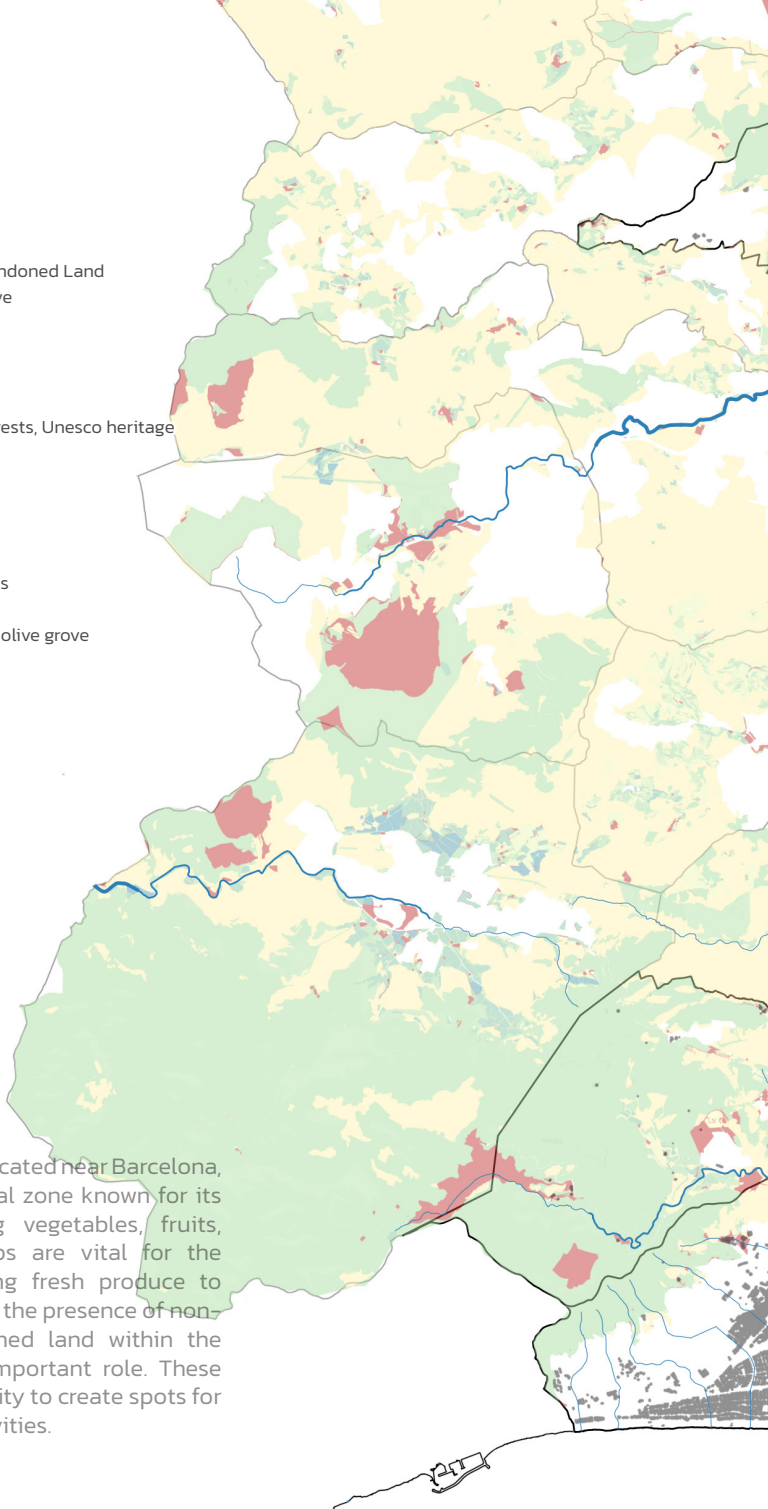
Viladecans

Barcelona - El Prat
Airport

Gavà

eldefels

Crops



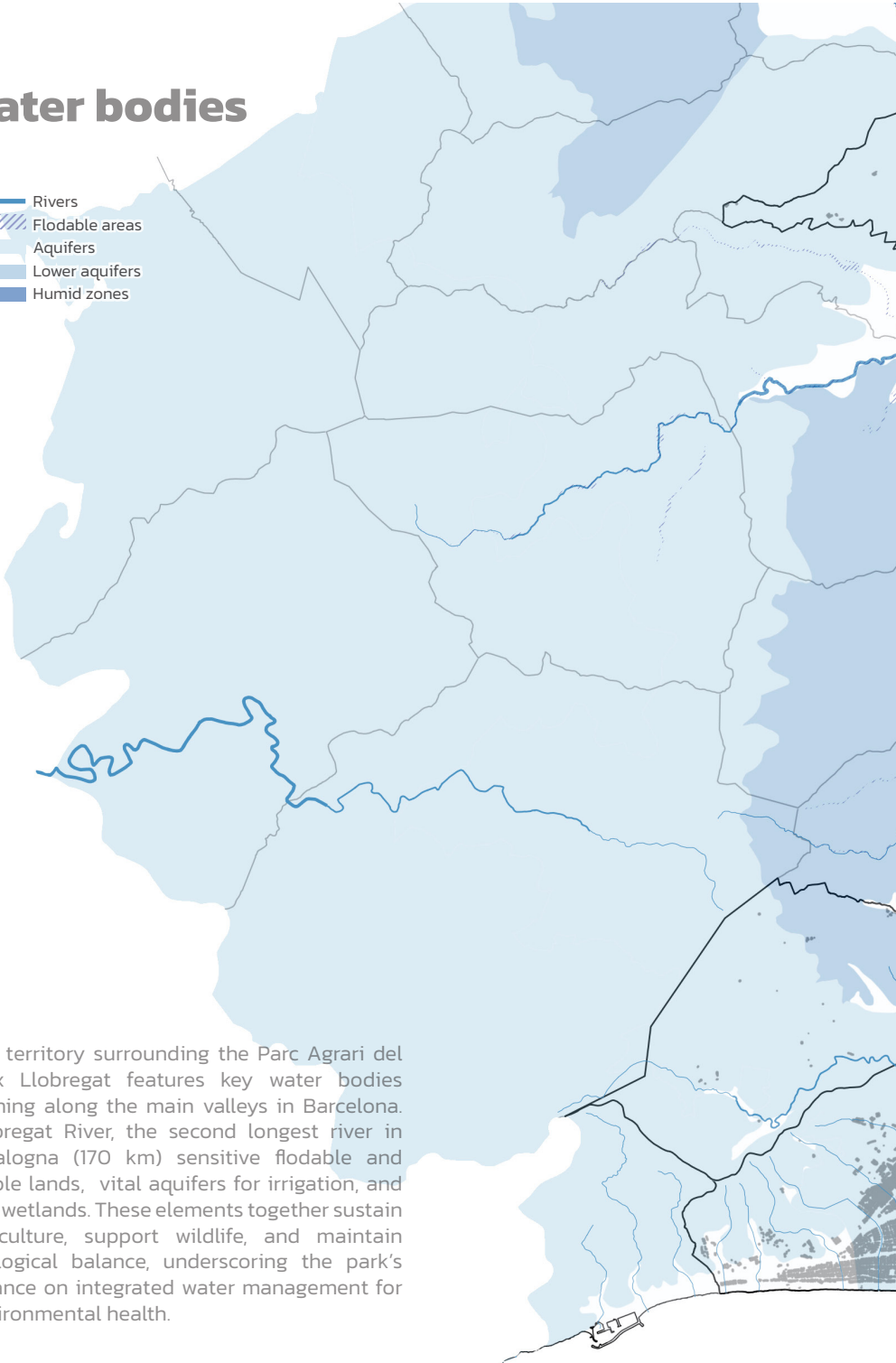
Parc del Baix Llobregat, located near Barcelona, is a significant agricultural zone known for its diverse crops, including vegetables, fruits, and flowers. These crops are vital for the local economy, supplying fresh produce to nearby markets. However, the presence of non-productive and abandoned land within the park plays an equally important role. These spaces offer an opportunity to create spots for fostering communal activities.



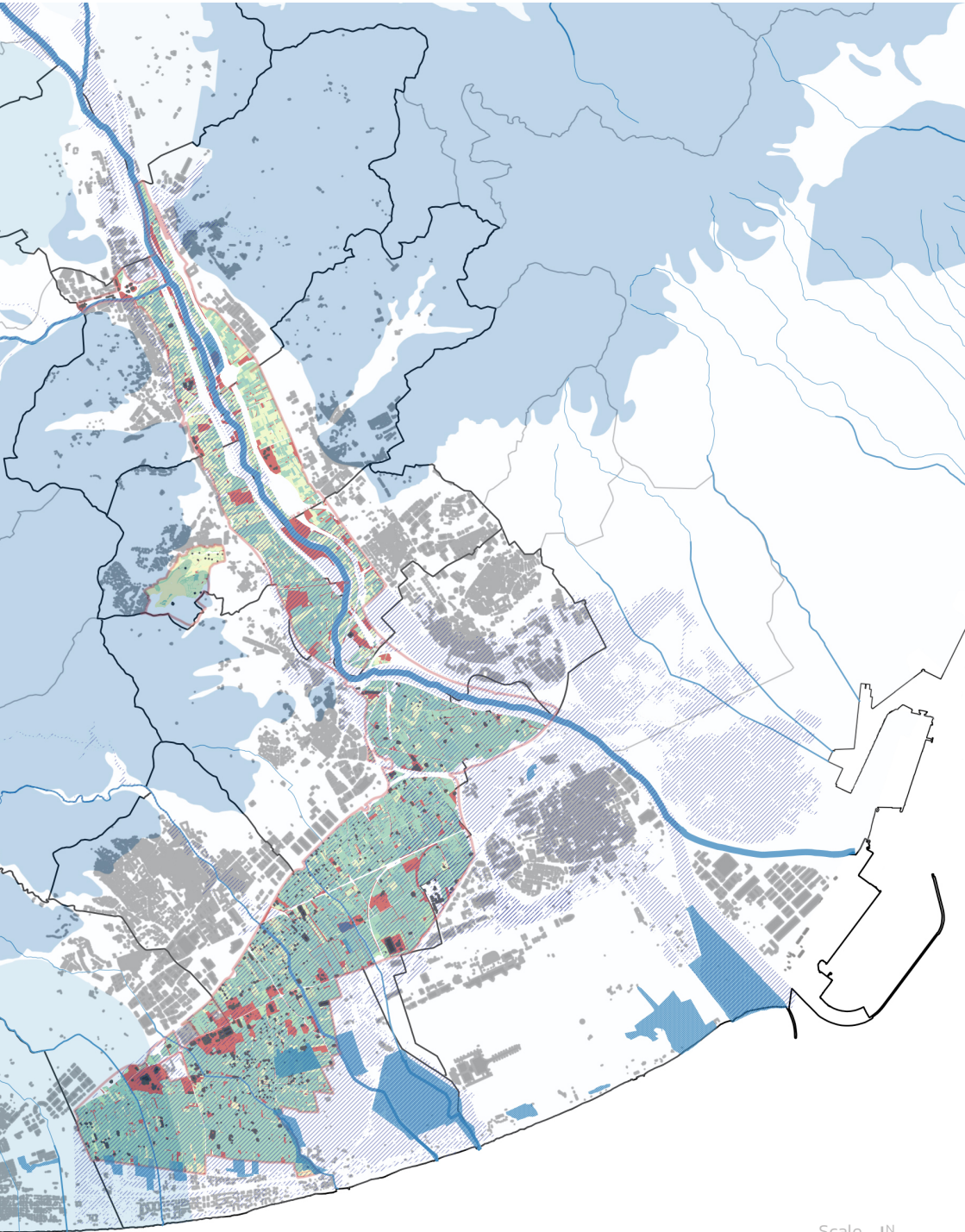
Scale 1:150,000 


Water bodies

- Rivers
- Flodable areas
- Aquifers
- Lower aquifers
- Humid zones

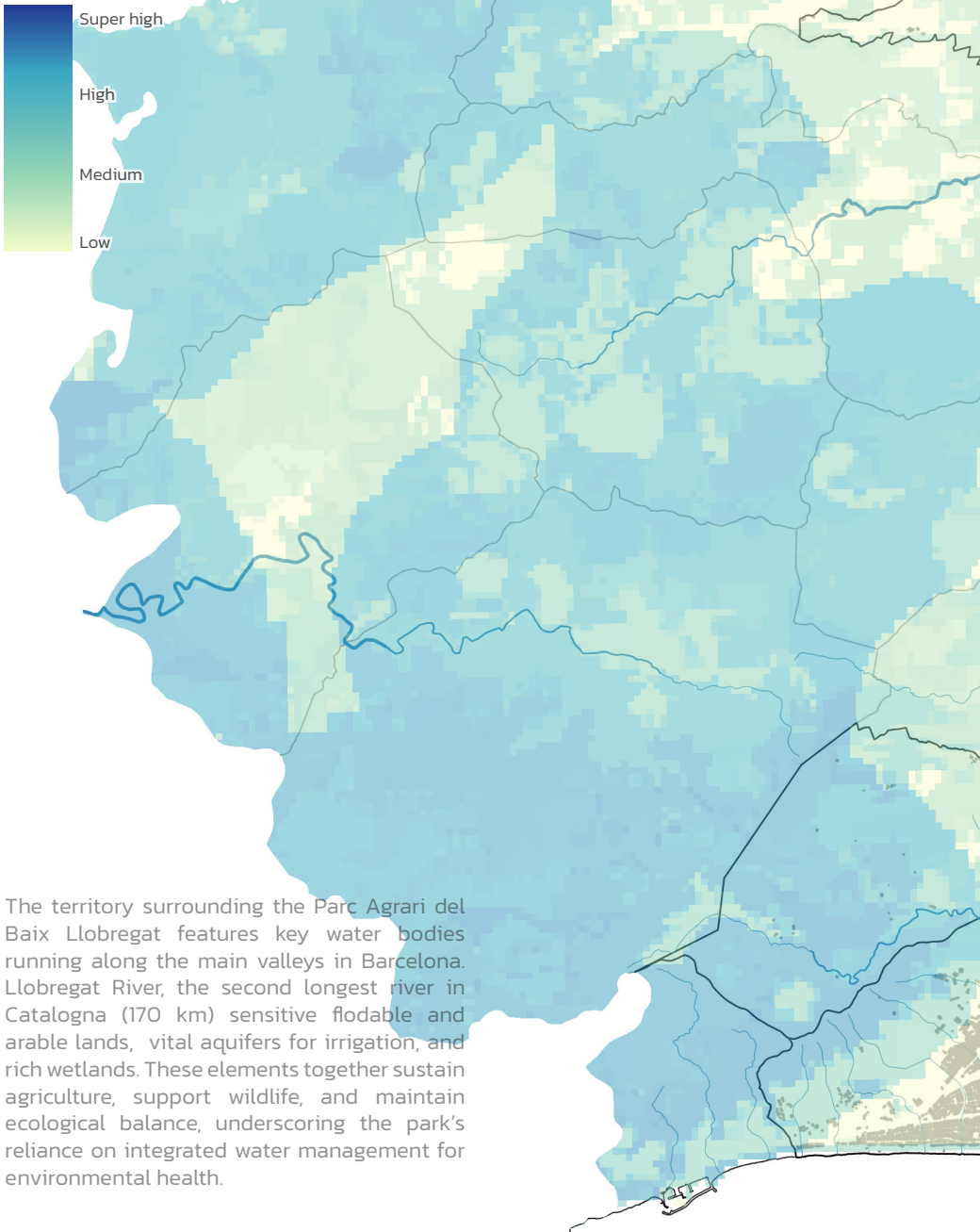


The territory surrounding the Parc Agrari del Baix Llobregat features key water bodies running along the main valleys in Barcelona. Llobregat River, the second longest river in Catalonia (170 km) sensitive floodable and arable lands, vital aquifers for irrigation, and rich wetlands. These elements together sustain agriculture, support wildlife, and maintain ecological balance, underscoring the park's reliance on integrated water management for environmental health.

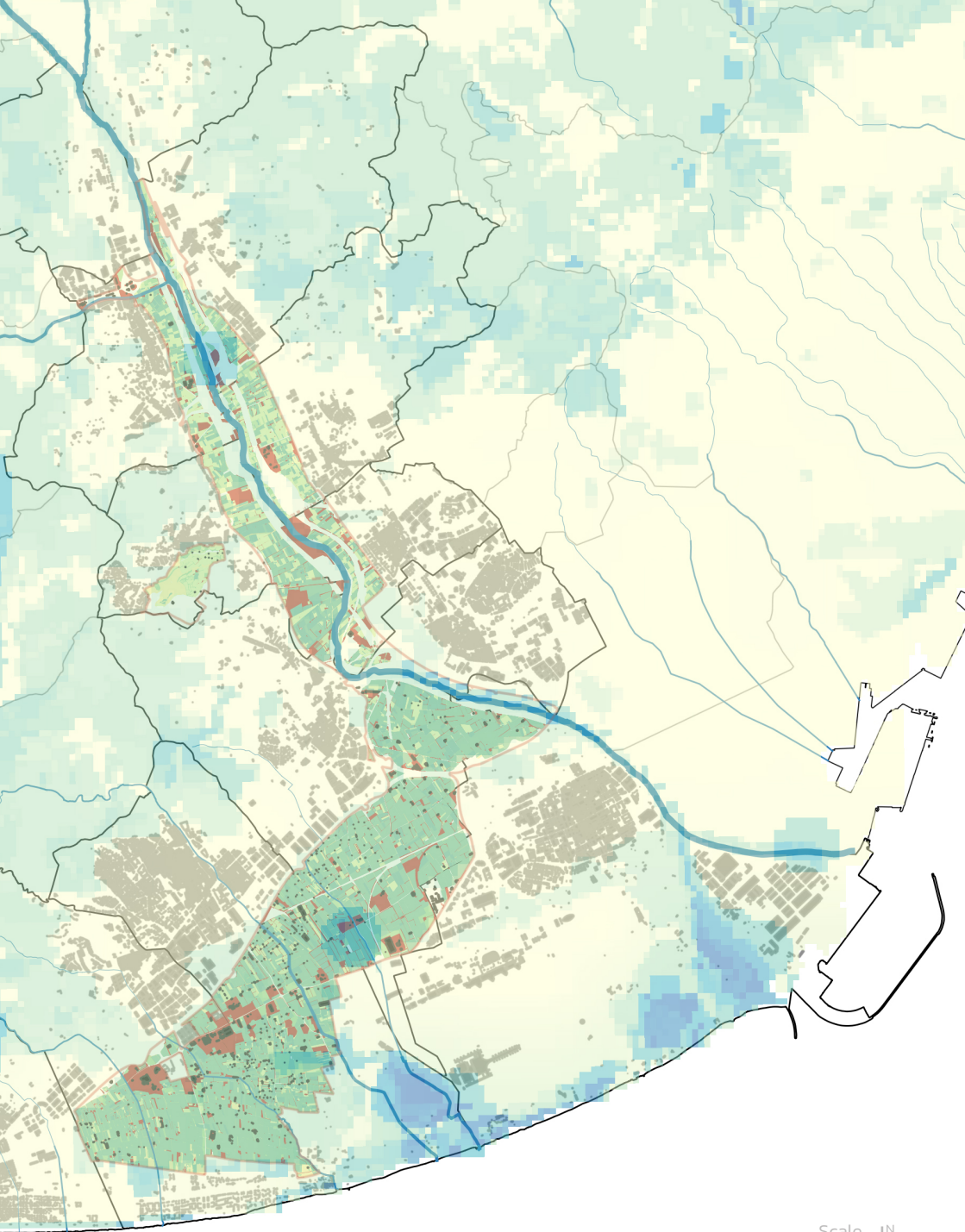


Scale 1:150,000 

Biodiversity Index

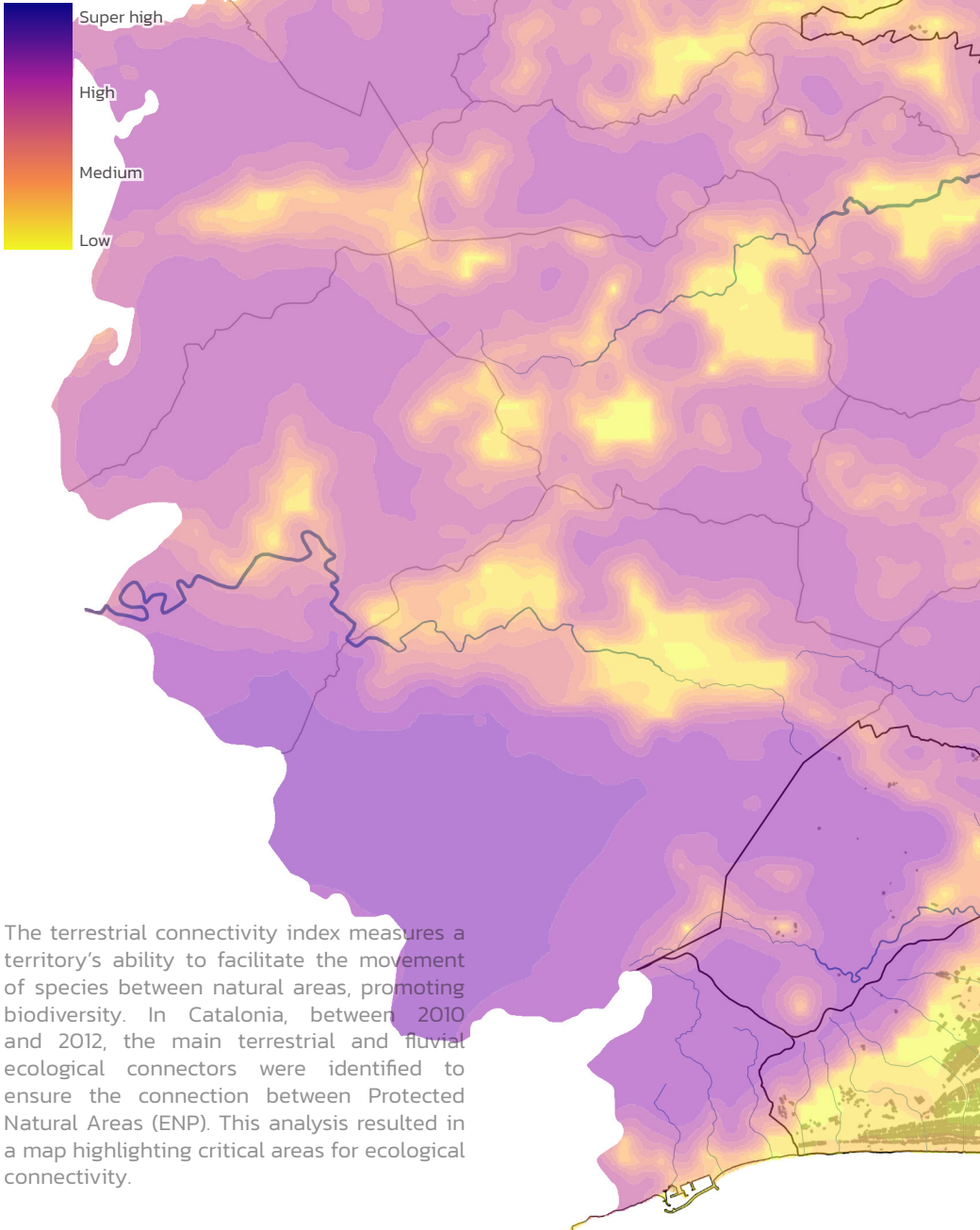


The territory surrounding the Parc Agrari del Baix Llobregat features key water bodies running along the main valleys in Barcelona. Llobregat River, the second longest river in Catalonia (170 km) sensitive floodable and arable lands, vital aquifers for irrigation, and rich wetlands. These elements together sustain agriculture, support wildlife, and maintain ecological balance, underscoring the park's reliance on integrated water management for environmental health.

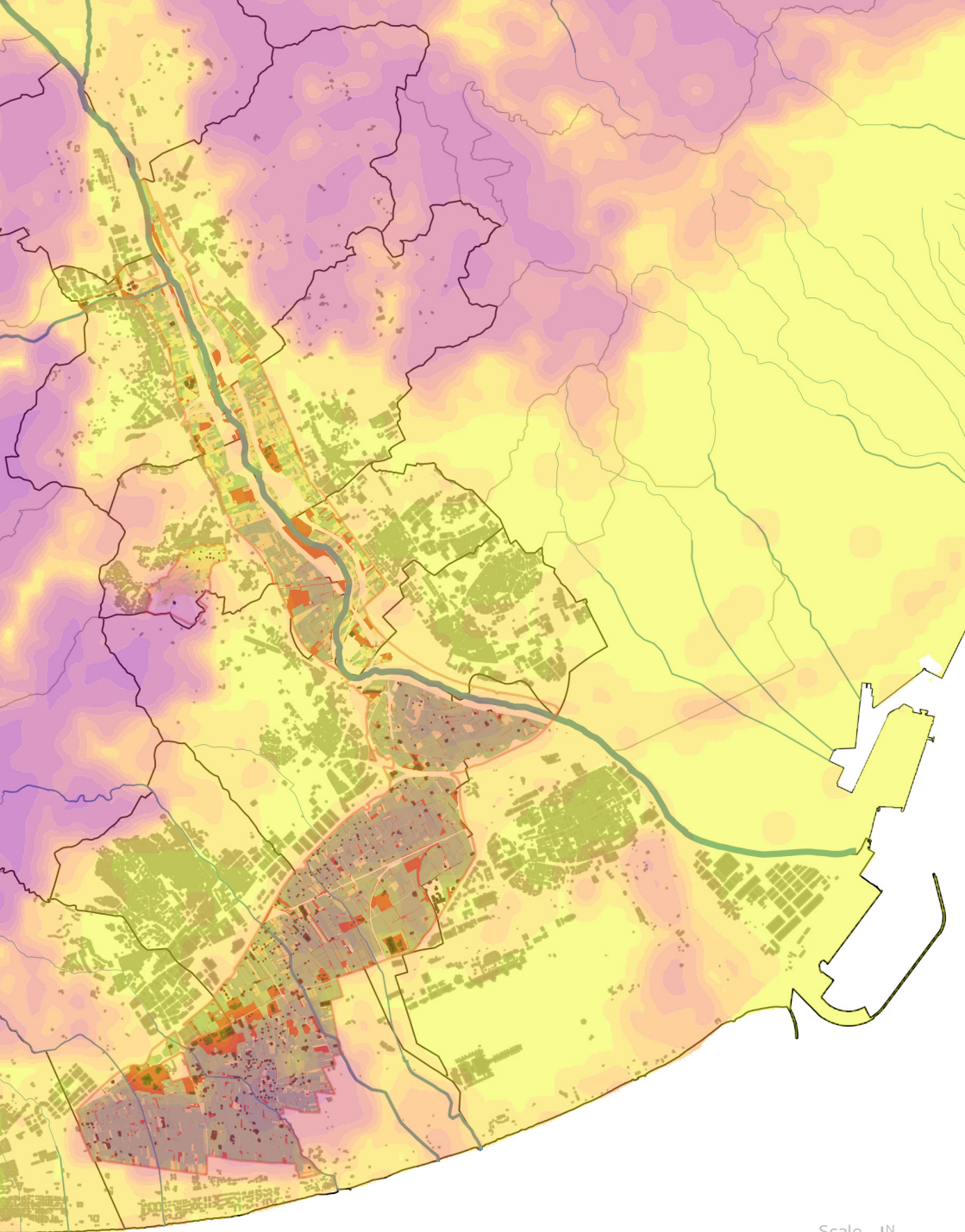


Scale 1:150,000 

Land Connectivity Index

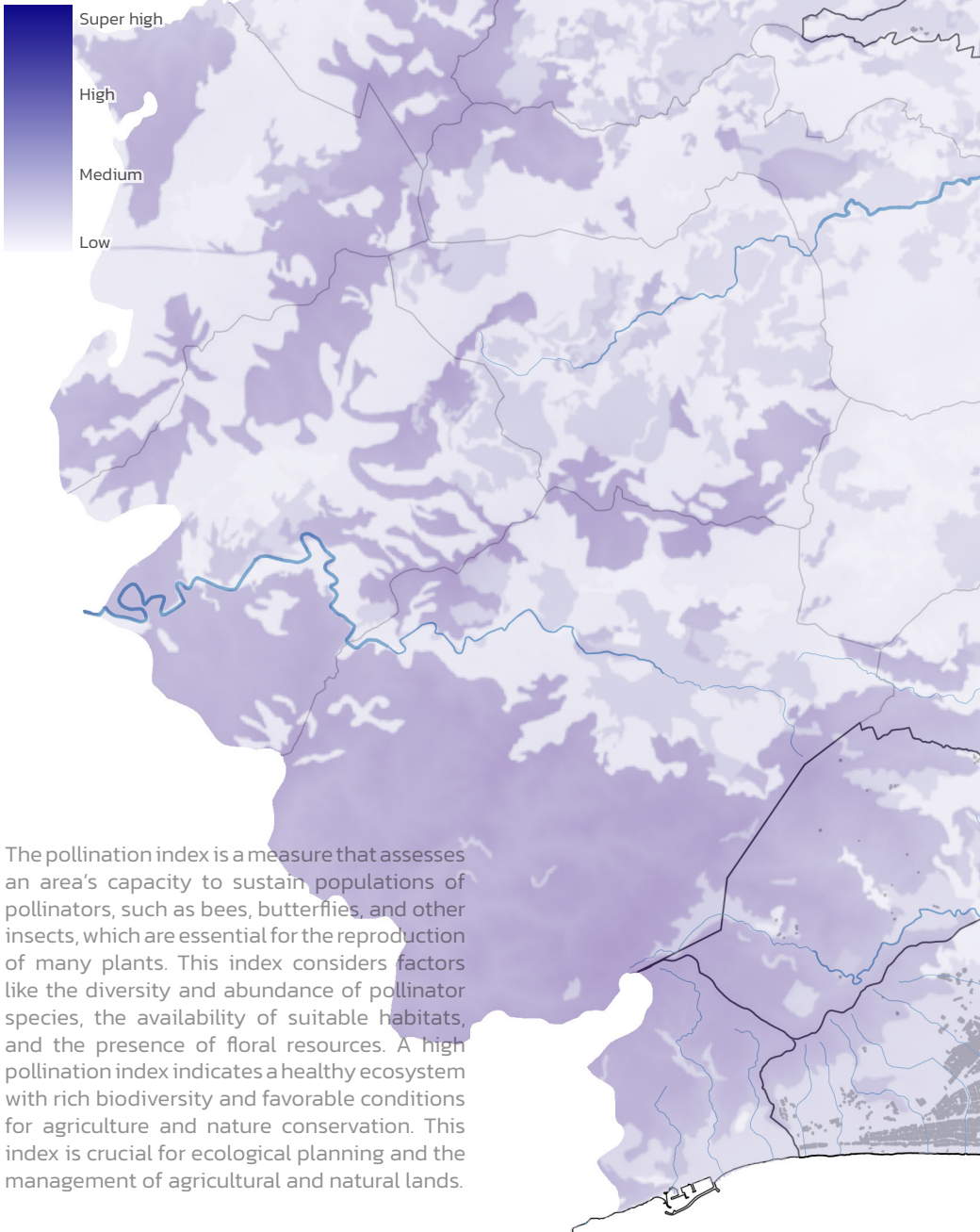


The terrestrial connectivity index measures a territory's ability to facilitate the movement of species between natural areas, promoting biodiversity. In Catalonia, between 2010 and 2012, the main terrestrial and fluvial ecological connectors were identified to ensure the connection between Protected Natural Areas (ENP). This analysis resulted in a map highlighting critical areas for ecological connectivity.




Scale 1:150,000 

Pollination index



The pollination index is a measure that assesses an area's capacity to sustain populations of pollinators, such as bees, butterflies, and other insects, which are essential for the reproduction of many plants. This index considers factors like the diversity and abundance of pollinator species, the availability of suitable habitats, and the presence of floral resources. A high pollination index indicates a healthy ecosystem with rich biodiversity and favorable conditions for agriculture and nature conservation. This index is crucial for ecological planning and the management of agricultural and natural lands.

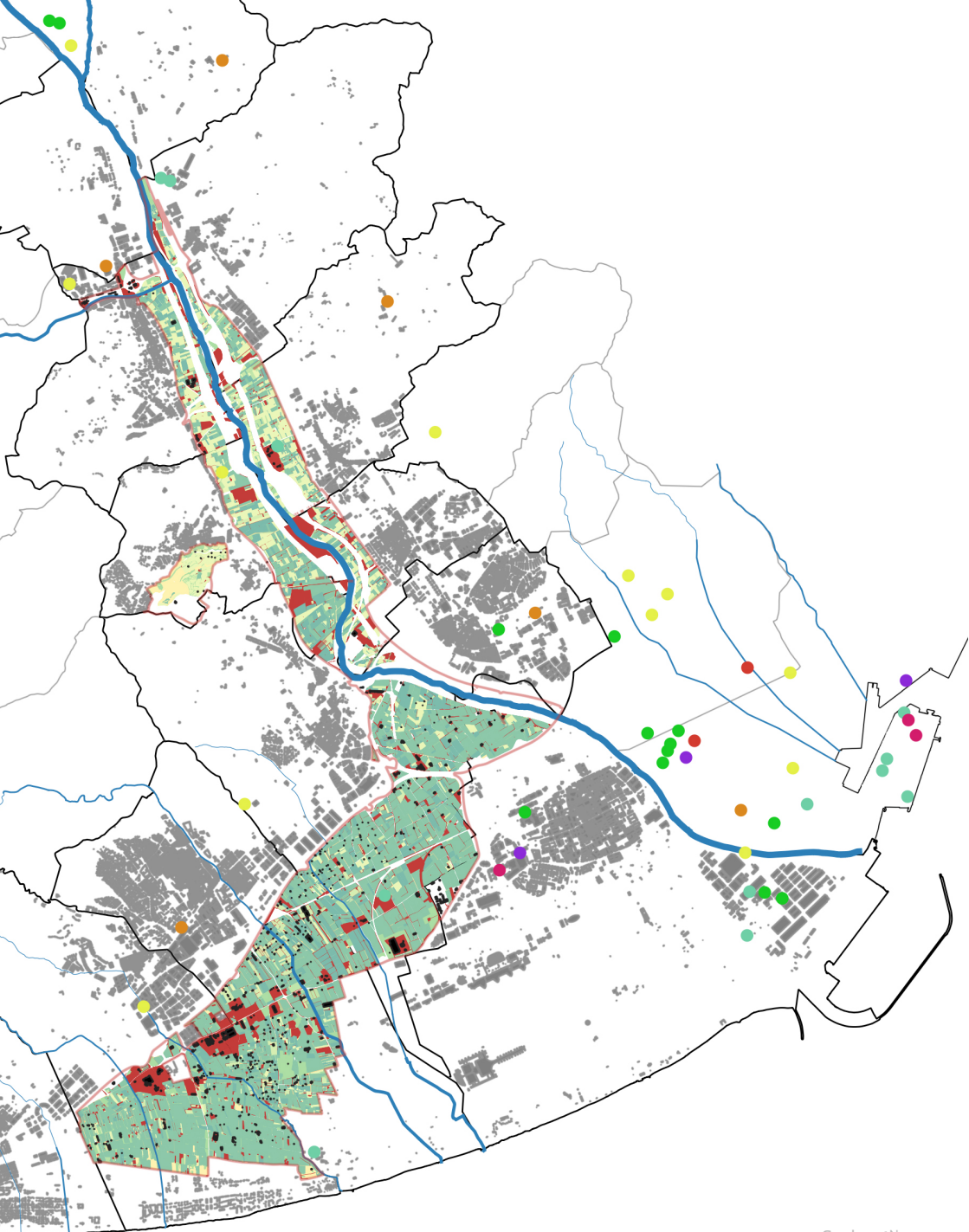


Scale 1:150,000 

Pollutant Sources Registry

- Organic solvents
- Waste management
- Leather industries
- Paper industries
- Chemical industries
- Textile industries
- Agri-food industries
- Mining sites
- Comustion facilities
- Production and treatment of metals
- Water treatment

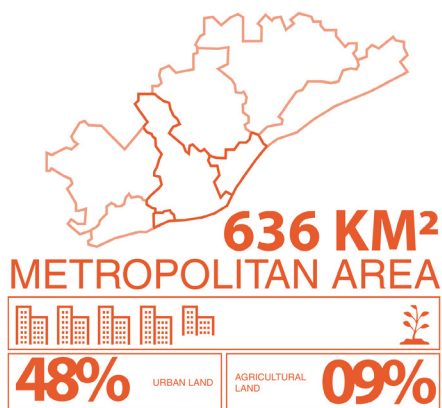
The PRTR (Pollutant Release and Transfer Register) is a publicly accessible database that tracks the release and transfer of pollutants from various industrial and other facilities. It includes data on a wide range of pollutants, such as heavy metals, greenhouse gases, volatile organic compounds (VOCs), pesticides, and other hazardous substances. The PRTR is designed to promote transparency and accountability, helping to monitor environmental impacts and enforce regulations. By providing detailed information on pollutants, it aids governments, researchers, and the public in understanding and mitigating the effects of industrial activities on the environment and public health.



Scale 1:150,000 

The park in data:

Facts and figures



IDESCAT 2013 / DOSSIER BR 2014

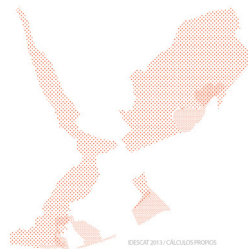
The Parc Agrari del Baix Llobregat (PABLL) is a key agricultural and ecological area in the Barcelona metropolitan region, spanning approximately 33.16 km². This area is about half the size of Barcelona's central zone between the Rondas, which covers 82.12 km². The park's size is comparable to the combined green spaces of Montjuïc and Ciutadella. The PABLL represents 5% of the Metropolitan Area of Barcelona, 25% of the Barcelonés comarca, and 20% of the municipalities in the Baix Llobregat within the park.

Despite its importance, the proportion of land dedicated to agriculture in the metropolitan and comarca areas is relatively low, ranging from 5% to 10%, with the majority of the land (48%) being urbanized. Agricultural land distribution within the park varies among municipalities. Santa Coloma de Cervelló, Sant Boi de Llobregat, Gavà, and Viladecans each allocate between 10% and 20% of their area to agriculture. The southern coastal strip of the park primarily falls within Gavà, while the southeast strip near the airport is in El Prat de Llobregat and Viladecans. The southwest strip, adjoining the mountains, is mainly in Gavà, Sant Boi, and Santa Coloma de Cervelló. Overall, the Parc Agrari del Baix Llobregat plays a vital role in preserving agricultural land and ecological balance amidst ongoing urban development in the region.

BARCELONA



LLOBREGAT



IDESCAT 2013 / CALCULOS PROPRIOS



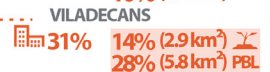
IDESCAT 2013 / DOSSIER BR 2014



IDESCAT 2013 / DOSSIER BR 2014

AN AGRICULTURAL AREA SIMILAR TO HALF OF THE CITY OF BARCELONA SURROUNDED BY POWERFUL AND EXPANDING URBAN CENTERS.

13 MUNICIPALITIES



IDESCAT 2013 / CÁLCULOS PROPIOS

Source: PABLL_BCN+ Facts and Figures _ Parque Agrario del Baix Llobregat, 2021

The park in data:

Demography



3.396.647 hab
METROPOLITAN AREA



2.240.437 hab
BARCELONÉS REGION



561.361 hab
PARK MUNICIPALITIES

The Parc Agrari del Baix Llobregat (PABLL) is not only significant for its agricultural and ecological value but also plays a crucial role in the local demography and society of the Barcelona metropolitan area. The 13 municipalities surrounding the PABLL are home to approximately 15% of the total population of the metropolitan area, which amounts to about 3 million residents living in proximity to the park.

Among these municipalities, four—El Prat de Llobregat, Viladecans, Sant Boi de Llobregat, and Gavà—are particularly notable as they together account for nearly 50% of the region’s population. These municipalities also correspond with the areas that have the largest portions of the park, highlighting a significant connection between the park’s extent and the population density.

The population around the park is predominantly active, with individuals aged 15 to 64 making up a substantial part of the demographic. Despite the high employment rate in this age group, only 0.17% of the workforce is engaged in agriculture, reflecting a low direct involvement in the park’s agricultural activities. This population exhibits a high annual growth rate of 11%, although there is a seasonal fluctuation with a decrease of about 4%. This growth underscores the dynamic nature of the region, influenced by both economic opportunities and seasonal changes. Overall, the Parc Agrari del Baix Llobregat is an essential green space that supports a significant part of the local population, offering a counterbalance to urban development and contributing to the socio-economic fabric of the surrounding municipalities.



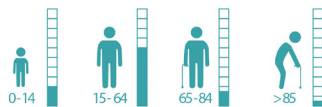
49%

MALE POPULATION

51%

FEMALE POPULATION

IDESCAT 2013



NUMBER OF POPULATION BY AGE

IDESCAT 2013

13 MUNICIPALITIES

- PALLEJÀ
 - 11.208 hab
 - 737 hab est.
- S. VICENÇ DELS HORTS
 - 28.181 hab
 - 1.863 hab est.
- S. COLOMA DE CERVELLO
 - 8.060 hab
 - 546 hab est.
- S. BOI DE LLOBREGAT
 - 83.408 hab
 - 4.667 hab est.
- GAVÀ
 - 46.377 hab
 - 1.449 hab est.
- CASTELLDEFELS
 - 63.077 hab
 - 1.606 hab est.

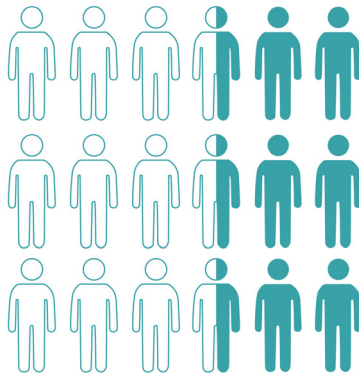


- EL PAPIOL
 - 4.041 hab
 - hab est.
- MOLINS DE REI
 - 24.878 hab
 - 1.168 hab est.
- S. FELIU DE LLOBREGAT
 - 43.769 hab
 - 4.114 hab est.
- S. JOAN DESPI
 - 32.812 hab
 - 1.521 hab est.
- CORNELLÀ DE LLOBREGAT
 - 86.687 hab
 - 3.443 hab est.
- EL PRAT DE LLOBREGAT
 - 63.419 hab
 - + 3.997 hab est.
- VILADECANS
 - 65.444 hab
 - 5.080 hab est.

IDESCAT 2013 / CÁLCULOS PROPIOS

LARGE NUMBER OF INHABITANTS AROUND THE PARK WITH HIGH GROWTH AND PRODUCTIVE AGES BUT FEW FARMERS

DEVELOPMENT



41% WORKING POPULATION
IDESCAT 2013



0,17%

Source: PABLL_BCN+ Demographic status _ Parque Agrario del Baix Llobregat, 2021

The park in data: Food Production

The Parc Agrari del Baix Llobregat (PABLL) is a crucial component of the agricultural landscape in the Barcelona metropolitan area, accounting for one-third of the region's total agricultural land. Within the park, 57% of the area is dedicated to agricultural use. However, a significant portion—15%—is non-productive land, and nearly 10% is allocated to infrastructure. Agricultural production in the PABLL is notable for its diversity and impact. Annually, 35% of the produce is sold directly through local “Km0” markets, emphasizing its role in regional, sustainable food systems. The remaining 65% is distributed through Mercabarna, serving primarily the broader Catalonia region.

The park is particularly known for its production of tomatoes, artichokes, onions, and lettuce, which together constitute 50% of its total agricultural output. This focus on specific crops highlights the park's role in providing essential fresh produce to both local markets and the wider area. In addition to commercial agriculture, the PABLL hosts around 1,000 community gardens, which cover approximately 0.45 km² of the total area. These gardens are predominantly located in the central riverine zones of the park, such as Sant Boi, Santa Coloma, Sant Joan Despí, and Sant Feliu de Llobregat. These community gardens not only contribute to local food production but also enhance the park's role as a community space. Overall, the PABLL is a vital agricultural hub within the Barcelona metropolitan area, balancing large-scale food production with community-oriented initiatives and sustainable practices.

05%+
OTHERS

06%
FAM. AGRICULTURE

08%
WATER AREAS

09%
INFRASTRUCTURE

15%
NON-PRODUCTIVE

57%
AGRICULTURAL LAND

0.45km²
SOCIAL CROPS
IDESCAT 2013 / CÁLCULOS PROPIOS

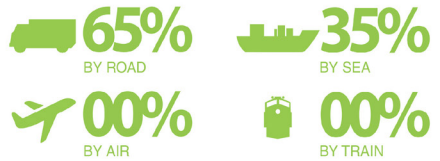
251
OTHER ACTIVITIES

DOSSIER BR 2014 / CÁLCULOS PROPIOS



22.700 tn
ANNUAL PRODUCTION

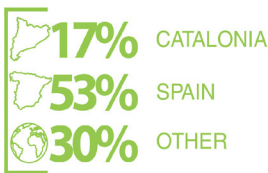
DOSSIER BR 2014 / CÁLCULOS PROPIOS



REGIONAL DISTRIBUTION

DOSSIER BR 2014 / CÁLCULOS PROPIOS

HIGH AGRICULTURAL AREA STILL TO BE EXPLOITED TO ITS FULL POTENTIAL WITH THE PRESENCE OF URBAN ORCHARDS AND 0 KM SALES.



380
CROPS

DOSSIER BR 2014

	23	LIVESTOCK
	9	EMPTY
	41	FROM < 1 HA
	286	1 TO 10 HA
	35	10 TO 50 HA
	2	50 TO 100 HA

DOSSIER BR 2014 / CÁLCULOS PROPIOS



The park in data:

Recycling & Sustainability

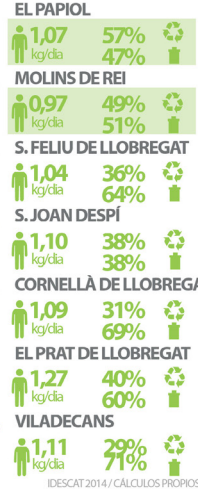
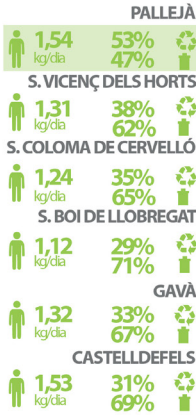


Waste management within the Parc Agrari del Baix Llobregat (PABLL) region involves a significant amount of coordination across the 13 municipalities surrounding the park. Annually, these municipalities generate approximately 245,040 tons of urban waste, of which only 34% is separated for recycling. The remaining 66% consists of mixed waste, which primarily undergoes mechanical and biological treatment processes. Among these municipalities, only Pallejà and El Papiol achieve a recycling rate exceeding 50% of the urban waste generated. This highlights a notable disparity in recycling efforts across the region, with the majority of municipalities still needing improvements in waste separation and recycling.

In terms of industrial waste, the total annual generation from these 13 municipalities amounts to 710,638 tons. Fortunately, 75% of this industrial waste is treated, reflecting a relatively high level of management and processing compared to urban waste. Overall, while there are significant efforts in managing industrial waste and advancing renewable energy, improving urban waste recycling rates remains a key challenge for the municipalities within the PABLL region. The ongoing initiatives in renewable energy and water purification, however, provide a positive outlook for the area's commitment to sustainability.



13 MUNICIPALITIES



710.638 Ton

INDUSTRY WASTE PER YEAR (13 MUNICIPALITIES)

1,22 KG

PER INHABITANT AND YEAR (13 MUNICIPALITIES)

1,33 KG

PER INHABITANT AND YEAR (BARCELONA)

75%

PROCESSED INDUSTRIAL WASTE

245.040 Ton

URBAN AND YEAR (13 MUNICIPALITIES)

36%

PROCESSED INDUSTRIAL WASTE (BARCELONA)

IDESCAT 2013 / CÁLCULOS PROPRIOS



34% SELECTIVE COLLECTION

- 10% GLASS
 - 12% PAPER AND CARDBOARD
 - 8% LIGHT PACKAGING
 - 19% ORGANIC WASTE
 - 13% PRUNING AND GARDENING
 - 12% BULKY WASTE
 - 26% OTHER
- IDESCAT 2014 / CÁLCULOS PROPRIOS

Source: PABLL_BCN+ Waste management _ Parque Agrario del Baix Llobregat, 2021

Masias: Rural architectures

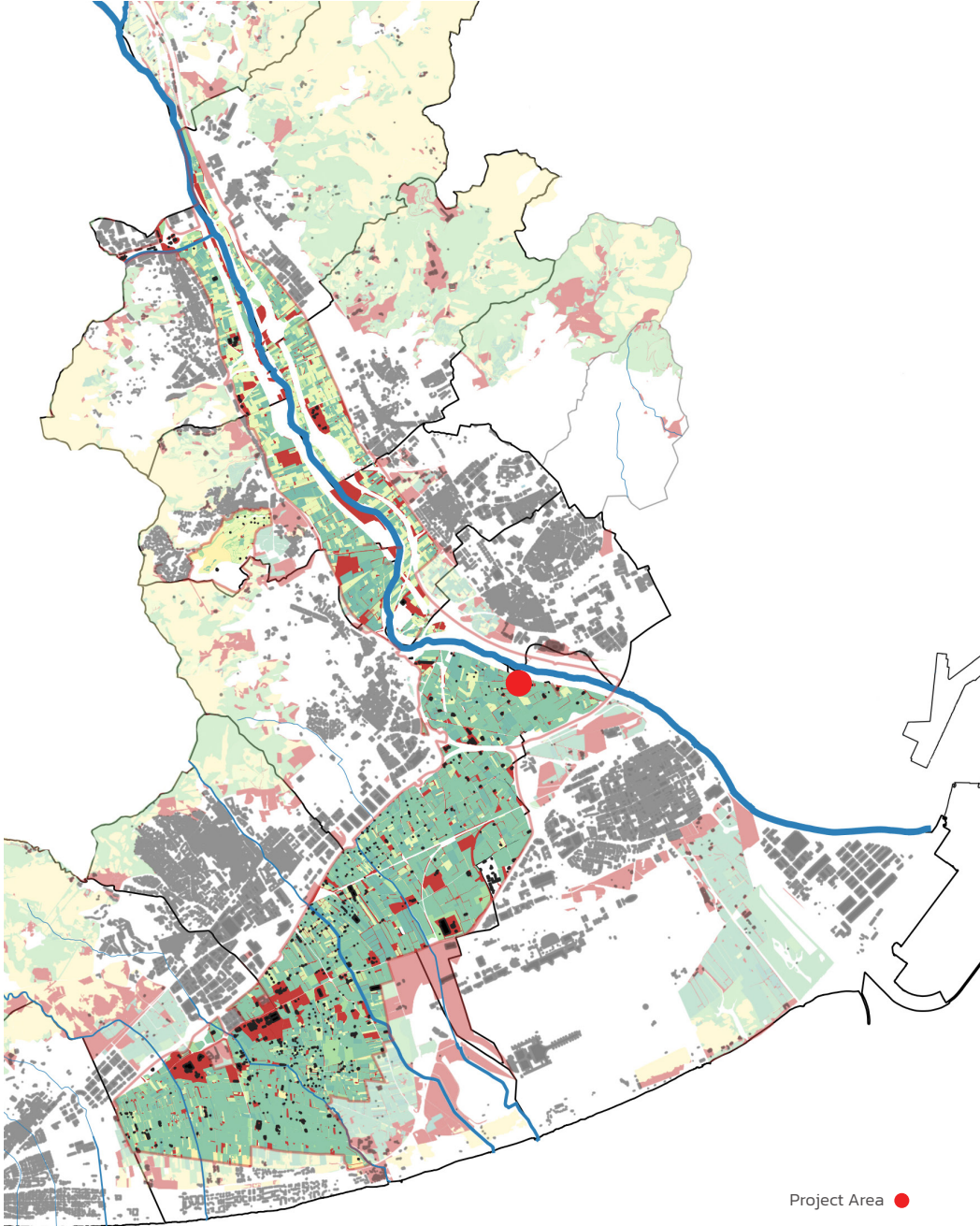


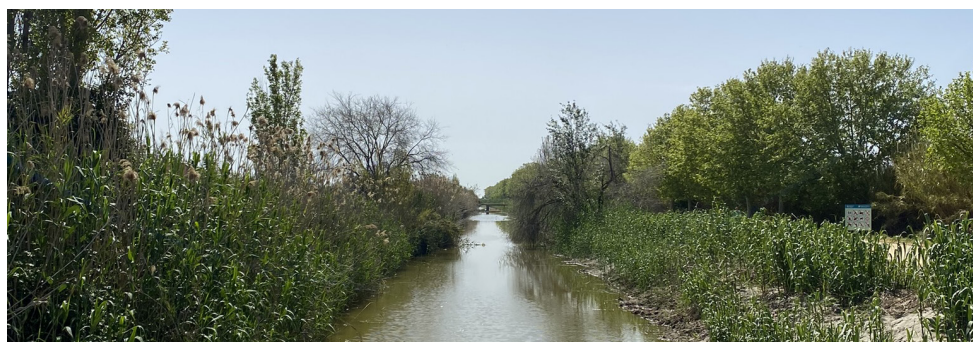
Masia de Ca L'Augusti _ Parc Etnològic de Tagamanent, Barcelona 2016

A Catalan masia is a traditional rural farmhouse in Catalonia, designed to integrate with and support agricultural practices. It serves as a self-sufficient agricultural house unit, typically including residential quarters, barns, and storage areas. These farmhouses are characterized by their robust, stone construction and are often surrounded by cultivated land, gardens, and orchards. The layout of a masia facilitates effective land use, incorporating features such as water management systems and terracing to enhance productivity and sustainability in farming..



Project Area

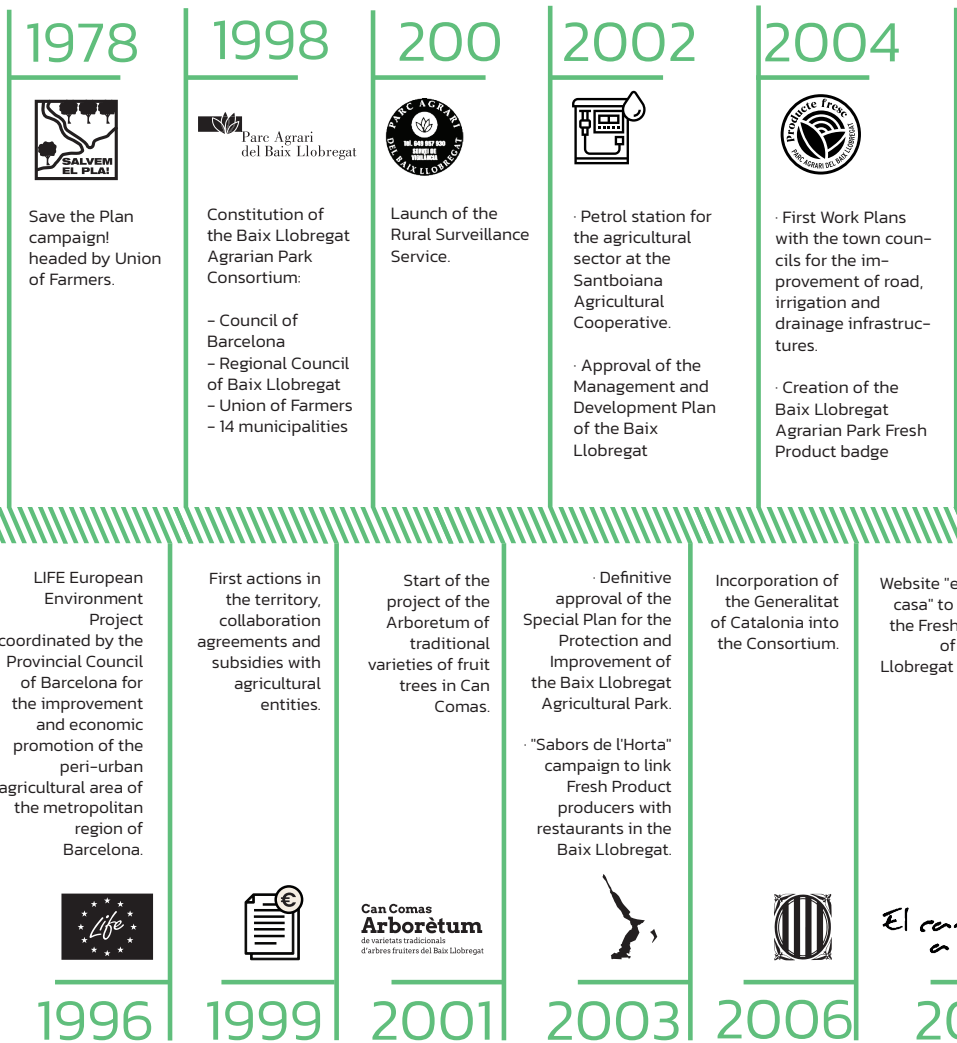




Since 1998 the Park promotes agricultural activity in the region together with specific environmental preservation programs to sustain Barcelona proximity consumption. The municipality of El Prat, with an agricultural tradition, is one of the 14 municipalities included in this park. Formerly part entails a great landscape privilege: having the town surrounded by fields, which today allow direct access to food products that can be purchased at the Mercat de Pagès. For the purpose of ReCITYing project, considering our intention of working with underutilized and abandoned spaces within the Parc Agrari context, we have decided to work with one of the non-productive agricultural lands in the centre of the park. It is located near Can Comas, the headquarters of the Parc Agrari Consortium, but it hasn't been used for the past few years. Due to its location, with easy access through an existing road and close connection to the river Llobregat, apart from the proximity with the existing infrastructure of Can Comas, we believe it is the ideal spot to develop our activities and finally bring citizens to the heart of the Parc Agrari del Baix Llobregat.

TIMELINE

Urban / Site evolution



200



Pipeline to supply regenerated water from the Gavà-Viladecans WWTP at the head of the corridors.

2012



First Farmers' Market of the Baix Llobregat Agrarian Park.

2015



· Revision of the Special Plan for the Protection and Improvement of the Baix Llobregat Agricultural Park.

· Incorporation of the Barcelona Metropolitan Area (AMB) into the Consortium.

2018



The INS Les Salines del Prat starts agricultural vocational training in Can Comas.

2022



New website of the Consortium: parcagrari.cat

· Camp to promote Product the Baix Agrarian Park.

Baix Llobregat Agrarian Park Land Exchange (PROBOT) and recovery of abandoned land.

Fauna Management Agreements with several municipalities of the Agricultural Park.

Collaboration between AMB and the CPABLL in the protection of urban legality.

Agrarian Test Space of Sant Vicenç dels Horts to contribute to generational relief.

· Review process of the PABLL Management and Development Plan.
· Celebration of the 25 years of the Consortium.

mp
ansa



2014



2016



2019

Espai Test Agrari
Sant Vicenç dels Horts

2021

25

2023





Photo survey



The Parc Agrari del Baix Llobregat, near Barcelona, blends agriculture and urban life. It preserves farming traditions while providing green spaces and fresh produce amid the city's sprawling urban landscape. Parc Agrari contributes to local identity of Barcelona with an image of a city with integrated farmland. The in situ perception is very much influenced by the proximity to the city and surrounding geomorphologic structures. Mountains and urban structures in the background together with valuable farmhouse architecture represent local landmarks. Users represented mainly by farmers and involved agronomists perceive the space in terms of its proximity to the city and its inhabitants as potential consumers.



Photo survey



The Parc Agrari situated along the Llobregat River, boasts diverse biodiversity. Its proximity to the river supports varied habitats, from wetlands to farmland, enriching both flora and fauna. Significant species can be found in high concentration in the natural protected areas of the Llobregat delta among the municipalities of El Prat, Viladecans, Gavà and Sant Boi de Llobregat. These are significant environmental sensitive areas for aquatic birds and migratory birds from Northern Europe and Africa. Located on the right bank of the final stretch of the Llobregat river, these networks of wetlands spread over 145 ha. Here we can find the main landscapes of the Delta: reed beds, wet meadows, pine forests, canyissars, beaches and coastal ponds, such as Cal Tet and Ca l'Arana.

SANT BOI DE LLOBREGAT

VILADECANS

C-32



4 Basses de Can Dimoni



B-204

C-31

Els Reguerons

La Murtra

2 El Remolar - Filipines



Platja de Viladecans

Platja del Prat

Photo survey



Although the Parc Agrari del Baix Llobregat fosters community engagement through farm visits and local markets, it is still unknown by most of the citizens of the surrounding municipalities that form the Parc Agrari. The visits by the part of the population that do know about the Parc usually happen to the leisure areas around the Llobregat river, and not to the agricultural fields itself. There is a high potential to disclose this hidden production space to the local citizens, and get people more connected to this valuable asset of the region. Not only does the Parc Agrari have abandoned areas, but it is also, in a way, currently abandoned by its own citizens despite the high yields produced seasonally to support the local supply chains and farmers' markets.



Photo survey



Fresh vegetables and food production in Barcelona takes up 6 % of the land. Livestock farming is less important (with 315 holdings) and fishing is negligible. Taken as a whole, it produces 38,752 tonnes of agricultural foodstuffs, 3,181 tonnes of fishing catches and 4,238 livestock units each year. The Parc Agrari del Baix Llobregat supports this production regionalising the supply chain with a range of crops, including agro-food industry. Its production feeds local markets, enhancing local food security and sustainability.

Artichokes are the Park's flagship product (405 ha) followed by tomatoes (188 ha). Other crops include potatoes (142 ha), cauliflower (132 ha), peaches (114 ha), green beans (111 ha), lettuce (99 ha), chard (97 ha) and onions (87 ha).



Public / Temporary openings

Selected event series



2024 How do we manage crops?

Technical conference on reclaimed water. The conference was held on Tuesday 6 February at 16h, at Masia Can Comas, Camí del Sorral, s/n in El Prat de Llobregat.



2023 Cineforum: 'Just eat it!' by Grant Baldwin

Viewing of 'Just eat it' by Grant Baldwin, a documentary that delves into the problem of food waste, based on a personal experience.



2023 Regensòl Project: Horticulture with the minimum amount of soil.

An event about the cultivation of 'Carboniato' (full plant remains + moniato cultivation) was proposed as a technique of rapid regeneration of the soil.



2023 School cooperatives market

School cooperatives market
Entrepreneurial Culture Programme at school
Past editions: 2020 - 2021 - 2022



2023 Seasonal cuisine

In this workshop participants learned how to use seasonal fruits and vegetables in delicious dishes.



2022 Welcome to Pagès

Benvinguts a Pagès (BaP) is a project that was born in 2016 in order to make known all the producers in Catalonia who open the doors of their homes to share their work in the field, the pasture, the farm or the workshop.



2022 Bio Week for organic food

From October 15 to 23, the 10th edition of the Bio Week for organic food was held at the Parc Agrari. Once again, numerous activities took place throughout Catalonia with the aim of promoting and publicizing organic production and food among the public.



2022 Papiol cherry festival

On the weekend of June 3 to 5, Papiol celebrated the 40th Cherry Festival and displays other local products.



2022 Fair of Sant Isidre

On May 14 Viladecans celebrated the 50th anniversary of the Sant Isidre Fair and the 20th edition of the Mostra d'Entitats. The Fair included a farmer's market, a photographic exhibition of Viladecans farming, a bread display, a gastro-nomic space and several workshops, among other activities.



2022 Territorial coordination and open innovation processes

LISODE, represented by Mathieu Dionnet, gave a two-day training on "Territorial governance and open innovation processes: tools and methods applied to water management" to local partners and participants





Stakeholder map

The project involves a diverse array of stakeholders, each contributing uniquely to its success. At the core is the Consortium of the Parc Agrari del Baix Llobregat, which unites the 14 municipalities within the park's jurisdiction. This consortium works closely with the Barcelona Provincial Council to ensure regional support and coordination. Farmers' unions play a critical role, representing the interests and needs of the local agricultural community, while the Baix Llobregat Commercial Council supports economic development and business interests within the region.

European Union Funds are essential for financing and enabling various project initiatives, providing a significant boost to its overall scope and impact. Cultural associations of Baix Llobregat contribute to the preservation and promotion of local heritage, enriching the project with cultural insights and public activities. open to the widest audience.

The Government of Catalonia offers overarching governance and strategic direction, ensuring alignment with broader regional policies. Local educational institutions in the 14 Municipalities around the Llobregat Park are engaged to foster educational programs and research, bridging the gap between academic insights and practical applications.

Together, these stakeholders with the IAAC form a collaborative network, each bringing their expertise and resources to advance the project and support the development of the Parc Agrari del Baix Llobregat.

